



# Caledonian

Telephone Cables

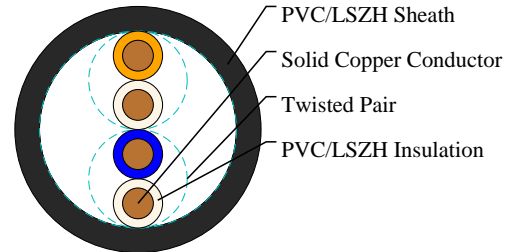
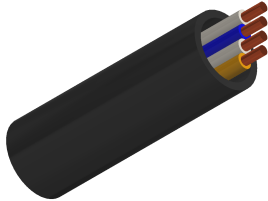
www.caledonian-cables.com

marketing@caledonian-cables.com

## INDOOR TELEPHONE CABLES

Indoor Central Office Cables to CW 1308

TP1308-YY-2P04



## APPLICATIONS

The cables are designed to handle low frequency signals for short range applications, suitable for internal connection of telephone systems and other communications equipment. Also, they are designed to be terminated in insulation displacement connectors (IDC). Insulated and sheathed in PVC or LSZH, these cables offer an extremely cost effective general signal cable for fixed installation.

## STANDARDS

CW 1308

## CABLE CONSTRUCTION

Conductors: Solid annealed copper as per class 1 of BS 6360/IEC 60228.

Insulation: Colour coded PVC TI 54/LSZH for copper conductor.

Twisted Pairs: Insulated conductors are twisted into pairs with varying lay length to minimize crosstalk.

Cabling Element: Pairs.

Cable Core Assembly: Layer construction, cables are laid up in concentric layers to form a compact and circular cable. Layer construction is for general use, including two cables for installation in customer's premises where a good appearance is required.

Core Wrapping: Cable containing more than 6 pairs have a polyester tape applied over the cable core prior to sheathing.

Screen (optional): A 24 $\mu$  aluminium polyester foil shield can be provided for fully enclosing the core with an overlap.

Drain Wire (optional): For screened cables, a solid tinned 0.5mm copper drain wire may be longitudinally laid to ensure electrical continuity of the screen.

Ripcord: Nylon ripcord may be placed parallel to the cores to facilitate sheath removal.

Sheath: PVC TM51 grade or LSZH compound. Grey, White, Cream or Black colours are standard.

## PHYSICAL AND THERMAL PROPERTIES

Temperature range during operation (fixed state): -30°C – +70°C

Temperature range during installation (mobile state): -20°C – +50°C

Minimum bending radius: 7.5 x Overall Diameter



# Caledonian

Telephone Cables

[www.caledonian-cables.com](http://www.caledonian-cables.com)

[marketing@caledonian-cables.com](mailto:marketing@caledonian-cables.com)

## DIMENSION AND PARAMETERS

Caledonian Cable Code	No. of Pairs	Conductor Size	Conductor Diameter	Insulation Thickness (min.)	Nominal Diameter over Insulation (max.)	Sheath Thickness (min.)	Overall Diameter (max.)	Approx. Weight
		mm <sup>2</sup>	mm	mm	mm	mm	mm	kg/km
TP1308-YY-2P04	2	0.126	0.4	0.15	0.85	0.4	3.9	15